

Infrastructure Delivery Plan

Proposed Submission Site Allocations Plan

April 2015



Contents

1	Introduction	2
	Purpose.....	2
2	Local Planning Policy	3
3	Definition, scope and prioritisation of Infrastructure	4
	What is Infrastructure?	4
	Priorities of Infrastructure	6
	Prioritisation and developer contributions	8
4	Funding and Delivery	8
5	Partnership Working	9
	Strategic site delivery	10
	Partnership for Urban South Hampshire	10
	Working with service providers	11
	Neighbourhoods.....	11
	Monitoring and Review.....	11
6	Background and Evidence	12
	Neighbourhood Plans.....	12
	Transport.....	12
	Schools and Education	15
	Healthcare.....	15
	Emergency Services	16
	Flood Defences.....	16
	Social Infrastructure	17
	Green Infrastructure.....	17
	Utilities	18
7	Appendix 1 – Schedule of Identified Requirements	23

1 Introduction

Purpose

- 1.1 The Infrastructure Delivery Plan (IDP) provides an assessment of the infrastructure required to support the planned new development in East Hampshire District. Infrastructure is required to ensure that future development is accompanied by the services and facilities needed. The IDP covers the area of East Hampshire District outside of the South Downs National Park (SDNP) to reflect the status of the SDNPA as both a local planning authority and a CIL charging authority.
- 1.2 The IDP is an evolving part of the evidence base for the East Hampshire District Local Plan: Joint Core Strategy (JCS) (Adopted 8th May 2014), the East Hampshire Community Infrastructure Levy (CIL) Charging Schedule and the East Hampshire District Local Plan: Housing and Employment Sites (Site Allocations Plan).
- 1.3 The National Planning Policy Framework (NPPF) requires the Council to proactively plan for and, where able, help deliver the necessary infrastructure to support new development.
- 1.4 The JCS has set out the amount and distribution of new development to be achieved across the district until 2028 and the Site Allocations Plan allocates specific sites for housing and employment development to 2028.
- 1.5 Appendix 1 to the IDP provides a list of infrastructure projects required to support the delivery of the housing and employment site allocations included within the JCS, Site Allocations Plan and emerging Neighbourhood Plans. The list is a current “snap-shot” and will evolve over time.
- 1.6 Some of the facilities or services may cross boundaries, be delivered by several providers or support development in more than one area. Therefore the district will work with partner organisations in the delivery of this infrastructure.
- 1.7 The funding for new infrastructure will come from a variety of sources. Some infrastructure will be secured during the granting of planning permission through a “Section 106” agreement in order to make a development acceptable. Other infrastructure will also be delivered directly by utility or service providers. Where there is a difference between the cost of infrastructure required to support development and available funding there will be a “**funding gap**”. Where there is a funding gap EHDC will seek to secure funding through the Community Infrastructure Levy (CIL). The overall purpose of the CIL is to ensure that costs incurred in providing infrastructure to support the development of an area can be funded (wholly or partly) by owners or developers of land. EHDC is the **charging authority** for the district (outside the SDNP).

- 1.8 In addition to this IDP East Hampshire District Council will publish a list of infrastructure items intended to be funded by the CIL known as a “**Regulation 123 List**” (The Community Infrastructure Levy Regulations 2010). The Regulation 123 list will be drawn from items within the IDP.
- 1.9 The CIL has the advantage of being able to “pool” funding for infrastructure to make it possible to deliver strategic, larger scale community infrastructure. The IDP is a useful document in helping to advise on the “**charging schedule**” of the CIL which set out the levy rates, or other criteria of the amount of CIL chargeable in respect of development. The charging schedule sets out the type of development liable for the CIL.

2 Local Planning Policy

- 2.1 The East Hampshire District Local Plan: Joint Core Strategy has set out the growth proposed in the district of East Hampshire up to the year 2028.
- 2.2 There are several JCS policies relevant to the provision of infrastructure:
- 2.3 Policy **CP2** of the JCS advises that new resource efficient housing and economic growth will be supported by necessary infrastructure.
- 2.4 Policy **CP16** advises that the provision or improvement of facilities and services, required as a result of new development will be secured through developer contributions either through S106 or the Community Infrastructure Levy (CIL) mechanisms. Table CP16 provides examples of facilities and services including community facilities, public services, and leisure and cultural uses.
- 2.5 Policy **CP18** covers the provision of open space, sport and recreation and built facilities and advises that,
 - b) all new residential development will be required to make provision for public open space that is designed to a high standard and is ‘fit for purpose’, either through on-site provision or by financial contribution to enhance or create off-site provision and management of open space (based on the minimum requirement of 3.45 ha per 1,000 population);*
 - c) provision will be secured through developer contributions through S106 or the Community Infrastructure Levy (CIL) mechanisms;*
 - d) where any deficiency in a particular category of open space in an area exists, the Council and National Park Authority will seek to offset this deficiency by seeking to secure a higher provision of this particular category of open space for the benefit of the community although the overall requirement of 3.45 ha per 1,000 population will remain.*

- 2.6 Policy **CP21** covers biodiversity and advises that new development will be required to contribute towards Green Infrastructure.
- 2.7 Policy **CP28** covers Green Infrastructure and advises that new green infrastructure must be provided either through on-site provision or financial contributions.
- 2.8 Policy **CP31** covers transport and advises, “Financial contributions will be sought from developments towards the implementation of identified transport infrastructure schemes, having regard to the costs of those schemes and the likely availability of public funding.”
- 2.9 Policy **CP32** covers infrastructure and states, “Where the provision or improvement of infrastructure is necessary, to meet community or environmental needs associated with new development or to mitigate the impact of development on the environment, such works or facilities should be provided either on or off-site, or the payment of financial contributions will be required through planning obligations and/or the Community Infrastructure Levy (CIL) to ensure that all such development makes an appropriate and reasonable contribution to the costs of provision.”

3 Definition, scope and prioritisation of Infrastructure

What is Infrastructure?

- 3.1 Paragraph 216 of the Planning Act 2008 defines infrastructure as including:
- (a) roads and other transport facilities,
 - (b) flood defences,
 - (c) schools and other educational facilities,
 - (d) medical facilities,
 - (e) sporting and recreational facilities
 - (f) open spaces, and
 - (g) affordable housing
- 3.2 Affordable housing was removed from the definition of infrastructure in the Community Infrastructure Levy Regulations 2010.
- 3.3 Community Infrastructure Levy - An overview (DCLG 2011), paragraph 12 refers to the 2008 Act definition of infrastructure and advises this can include, “*transport, flood defences, schools, hospitals, and other health and social care facilities. This definition allows the levy to be used to fund a very broad range of facilities such as play areas, parks and green spaces, cultural and sports facilities, district heating schemes and police stations and other community safety facilities. This gives local communities flexibility to choose what infrastructure they need to deliver their development plan*”.
- 3.4 Paragraph 162 of the NPPF covers Infrastructure and states:
- Local planning authorities should work with other authorities and providers to:

- assess the quality and capacity of infrastructure for
 - transport,
 - water supply,
 - wastewater and its treatment,
 - energy (including heat),
 - telecommunications,
 - utilities,
 - waste,
 - health,
 - social care,
 - education,
 - flood risk and coastal change management, and its ability to meet forecast demands; and
- take account of the need for strategic infrastructure including nationally significant infrastructure within their areas.

3.5 The NPPF references security, community and cultural infrastructure. It also requires local planning authorities to plan positively for the creation, protection, enhancement and management of networks of biodiversity and green infrastructure. The NPPF defines green infrastructure as “*a network of multi-functional green space, urban and rural, which is capable of delivering a wide range of environmental and quality of life benefits for local communities*”.

3.6 The above references by the NPPF to types of infrastructure make it possible to identify three broad categories of infrastructure, as listed below. The examples are not exhaustive; they simply illustrate what might be included under each category.

Physical infrastructure – e.g. transport (including public transport, cycling and pedestrian paths, water supply and waste management, public realm, energy supply, telecommunications and flood alleviation.

Social infrastructure – e.g. education, health, social care, emergency services, court and probation services, arts and cultural venues, sport and recreational facilities, community halls and religious facilities.

Green infrastructure – e.g. public open space, green space, parks and play space.

3.7 In general, the IDP defines ‘infrastructure’ as ‘any facility, service or physical structure that supports or enables proposed development, whether privately or publicly funded’.

3.8 Therefore the definition of infrastructure is wide ranging. For the purposes of this IDP infrastructure has been placed within the following general categories in table 1. However the list is not all encompassing and infrastructure items often cross several categories (for example a sport centre provides community, sporting and health infrastructure whilst an allotment provides community and green infrastructure).”

Table 1: Infrastructure Categories	
Category	Examples
Transport	Strategic Road Network Local Road Network Rail Services Bus Services Community Transport Walking and Cycling Parking
Schools and Education	Early years and Childcare Primary Schools Special Schools Further & Higher education Adult Learning
Healthcare	Primary Care Secondary Care
Emergency Services	Police Fire and Rescue Service Ambulance
Flood Defences	
Social Infrastructure	Sports (Indoor and outdoor) Leisure Heritage Facilities Libraries Community facilities Allotments Cemeteries & Crematorium
Green Infrastructure	Habitat creation and mitigation
Utilities	Waste/Recycling Water supply Wastewater treatment /Sewerage Gas supply Electricity supply Telecommunications

Priorities of Infrastructure

- 3.9 Infrastructure planning involves prioritisation at all stages of the planning process. At the strategic level, this may involve targeting investment for maximum impact. Alternatively there may be difficult choices about which infrastructure is essential for delivering growth and must therefore be delivered in advance of other requirements. During the master planning and planning application stages there may be pressure in terms of managing competing demands for infrastructure in the context of development viability and timing/phasing requirements. In general, prioritisation reflects development viability, the availability of public sector funding as well as Council and community priorities.
- 3.10 Some types of infrastructure are essential to enable development to proceed, while others are necessary to ensure that communities are sustainable on the grounds of quality of life and impact upon the environment. While the Council may wish to deliver all types of

infrastructure, prioritisation may be required because of the availability of public and private sector funding sources and other commitments.

- 3.11 The IDP will assess the priority of the delivery of required infrastructure. General schemes are defined as **Essential infrastructure**.
- 3.12 Essential infrastructure can be broken down into two sub-categories; **critical and important**. If the identified infrastructure is critical then without its development cannot commence e.g. flood risk mitigation and some transport/utility infrastructure. Otherwise the identified infrastructure is important to support new development but the precise timing is less critical and development can be phased to commence ahead of its provision e.g. schools and primary healthcare facilities.
- 3.13 Other infrastructure can be defined as **Place-shaping infrastructure**.
- 3.14 The delivery of place-shaping infrastructure is needed in order to build sustainable communities but the timing is not as critical when compared to essential infrastructure over the plan period e.g. libraries and other cultural provision.
- 3.15 The CIL Regulations advise that a proportion of CIL charging authority receipts are to be passed directly to those Parish and Town Councils where development has taken place (see Regulation 59A for details). This is known as the **neighbourhood portion**.
- 3.16 Communities that draw up a neighbourhood plan or neighbourhood development order (including a community right to build order), and secure the consent of local people in a referendum, will benefit from 25 per cent of the levy revenues arising from the development that takes place in their area.
- 3.17 Communities without a neighbourhood plan will benefit from 15 per cent of the levy revenues arising from the development that takes place in their area.
- 3.18 It will be the responsibility of the Parish, Town or Community Council to prioritise the spending of their portion.
- 3.19 Communities without a Parish, Town or Community Council will still benefit from the 15% or 25% neighbourhood portion. If there is no Parish, Town or Community Council, the District Council will retain the levy receipts but will engage with the communities where development has taken place and agree with them how best to spend the neighbourhood funding.
- 3.20 Further details are available within the NPPG: (<http://planningguidance.planningportal.gov.uk/blog/guidance/community-infrastructure-levy/spending-the-levy/>)
- 3.21 The IDP does not deal with 'nationally significant infrastructure projects'. None have been identified within the district, and are not currently anticipated as required within the Local Plan period.

Prioritisation and developer contributions

- 3.22 It is the responsibility of the Council to decide on the prioritisation of developer contributions. As part of the process of preparing and adopting the Council's CIL Charging Schedule, the Council will need to identify priorities for spending funds secured through the CIL, and the IDP will form the basis for this prioritisation.
- 3.23 The Council will develop a corporate prioritisation process for the spending of the CIL and Section 106. This process will take account of:
- The spatial pattern of growth;
 - The importance of physical infrastructure in enabling development and
 - Opportunities to deliver specific pieces of infrastructure e.g. through new funding opportunities.

4 Funding and Delivery

- 4.1 The infrastructure schedules (appendix 1) seek to set out the infrastructure needs, costs, phasing and delivery responsibilities of the development proposed in the JCS, Site Allocations and emerging Neighbourhood Plans. These schedules, which will continue to be updated on an annual basis, will enable the Council to prioritise investment from a range of funding sources in order that new development is accompanied by the delivery of wider economic, social, environmental and sustainability objectives.
- 4.2 The figures in appendix 1 are based on the best available information reflecting the level of assessment undertaken. Many essential infrastructure requirements have been identified however specific details of cost have yet to become available. The costs are included within the schedule on a non-prejudicial basis.
- 4.3 The role of the Council in delivering the necessary infrastructure to make this happen will take several forms, such as:
- Core policies – generic policies within the Core Strategy and future Development Management DPD will support the delivery of infrastructure and requests for developer contributions
 - Spatial policies – specifying infrastructure requirements for strategic sites allocated in the Core Strategy, for smaller sites allocated in the Site Allocations Plan, or by allocating sites for specific infrastructure items
 - Directly funding infrastructure.
 - Indirectly funding infrastructure – by enabling private sector investment, including negotiating developer contributions through section 106 agreements or the Community Infrastructure Levy (CIL)
 - Indirect funding – by influencing investment by another public sector organisation.
- 4.4 A variety of funding mechanisms are available including the following:
- Section 106

- CIL
 - Section 278
 - Grant funding
 - New Homes Bonus
 - Local authority commercial development activity
 - Local Enterprise Partnership Funding
 - Local Sustainable Transport Fund (LSTF)
 - Local Transport Board
 - Service providers
- 4.5 The role of Section 106 agreements has been scaled back to cover only site-specific mitigation and, therefore, they have limited ability to fund wider infrastructure requirements. Their remit will include affordable housing contributions, potentially the provision of land for local community facilities, open space provision and both on-site and off-site environmental measures.
- 4.6 Contributions from development towards the infrastructure requirements of strategic growth are expected to come through the Community Infrastructure Levy (CIL).
- 4.7 Section 278 of the Highways Act 1980 enables agreements to be made for the private sector funding of works on the strategic road network. This is a financial mechanism for ensuring delivery of mitigation works necessary for the granting of planning permission.

5 Partnership Working

- 5.1 EHDC will work with other authorities and providers in accordance with paragraph 162 of the NPPF.

Working with Neighbouring Authorities

- 5.2 The Council has worked and will continue to work with neighbouring authorities to address cross-boundary service provision and the resolution of infrastructure concerns.
- 5.3 EHDC shares boundaries with the following authorities:
- Basingstoke and Deane Borough Council
 - Chichester District Council
 - Hart District Council
 - Havant Borough Council
 - Waverley Borough Council
 - Winchester City Council

- 5.4 Each authority will be preparing its own IDP. EHDC promotes cross border working with all of the above.

South Downs National Park

- 5.5 The South Downs National Park covers 57% of the East Hampshire District. The SDNPA is the local planning authority for the National Park part of the district and is also the charging authority for CIL. The EHDC JCS makes a distinction between growth proposed within the SDNP and outside. An “Infrastructure Delivery Plan - Interim Statement and Infrastructure Schedule (July 2013)” was prepared jointly between EHDC and the SDNPA in support of the EHDC JCS.
- 5.6 The SDNPA is currently preparing its own National Park Local Plan and also preparing its own park-wide IDP. EHDC will continue working in partnership with the SDNPA in line with the NPPF. Elements of the infrastructure required within the park part of the district may have a strategic or cross-boundary impact.

Strategic site delivery

- 5.7 Whitehill & Bordon is being regenerated following the relocation of the Army’s Defence School of Electronic and Mechanical Engineering. Over 4,000 new dwellings, a new town centre, employment areas, green spaces and community facilities are proposed. The IDP supports the delivery of this strategic allocation in the JCS by identifying and prioritising infrastructure requirements.

Partnership for Urban South Hampshire

- 5.8 EHDC is one of eleven authorities engaged in collaborative partnership known as the Partnership for Urban South Hampshire (PUSH). PUSH comprises Hampshire County Council; the unitary authorities of Portsmouth, Southampton and Isle of Wight; and the district authorities of Eastleigh, East Hampshire, Fareham, Gosport, Havant, New Forest, Test Valley and Winchester.
- 5.9 PUSH recognises that development plans of the respective local planning authorities will identify their own infrastructure needs, and that subsequent provision in South Hampshire will be funded by a range of public, private and third sector organisations.
- 5.10 PUSH is currently working on a strategy to provide a framework to guide sustainable development to 2036. The intention is for PUSH to prepare a South Hampshire Infrastructure Plan to identify and cost the strategic infrastructure projects needed to deliver economic growth, new homes, improved quality of life and more sustainable communities. The principle of a sub-regional element of CIL is being considered by PUSH and work is underway to examine the merits.

Working with service providers

- 5.11 The council has repeatedly engaged with infrastructure service providers over the preparation of the JCS and Site Allocations Plan and will continue to do so.
- 5.12 Different service providers respond with varying levels of detail. Some assessments of infrastructure requirements are based on specific plans, while others derive from application of standards. It is expected that plans will be refined and cost estimates will become more robust as the date of delivery approaches. Again, regular review of the IDP will assist in capturing any changes.

Neighbourhoods

- 5.13 The Government has stressed that local planning authorities should work closely with neighbourhoods to decide what infrastructure they require. This approach has been strengthened by the Localism Act 2011, and it is one fully embraced by EHDC.
- 5.14 EHDC has used the Community Team and Community Forums which cover all parish and town councils within four geographical areas (see plan 1).
- 5.15 The provision of infrastructure at the community level will be a key determinant in the sustainable development of East Hampshire

Monitoring and Review

- 5.16 The Council's Annual Monitoring Report (AMR), which measures policy performance, will incorporate the annual monitoring of the IDP, as well as that of the JCS and Site Allocations Plan. This will bring together the analysis of policy effectiveness and progress in delivering the infrastructure required to create sustainable development.

6 Background and Evidence

- 6.1 A wide range of infrastructure requirements are listed in the [Hampshire strategic infrastructure statement](#). The latest version of this document is version 1 dated February 2013.

Neighbourhood Plans

- 6.2 Alton, Bentley, and Medstead and Four Marks are three areas currently designated as Neighbourhood Plan Areas. Alton and Bentley are currently preparing Neighbourhood Plans.
- 6.3 The JCS identifies a requirement for a minimum of 700 houses and about 7ha of employment land at Alton. The Alton Neighbourhood Plan will allocate housing sites and will also identify additional infrastructure requirements. The Site Allocations Plan will allocate the 7ha of employment land identified in the JCS and an additional 3ha identified to make up for employment land developed for alternative uses and land which was allocated for employment which has subsequently been developed for other uses.
- 6.4 Additional sources of information are available within the “Alton Study Final Report (2013), Draft Alton Neighbourhood plan Consultation Statement (2015), the Bentley Parish Council website and other evidence base information.

Transport

- 6.5 HCC produce a yearly Transport Statement and associated [Schedule of Transport Improvements updated for East Hampshire](#). The document provides a list of transport requirements needed to support the growth proposed.

Roads

- 6.6 East Hampshire being a largely rural district has a higher than average reliance on the private car.
- 6.7 The road network in East Hampshire is divided between the Strategic and Local Road Network. Lead organisations for the Strategic Network are:
- Highways Agency
 - Department for Transport
 - Hampshire County Council
 - West Sussex County Council

- 6.8 The strategic road network consists of motorways and major A-roads managed by the Highways Agency. Within East Hampshire this comprises the: A3, A31, A32, A272, A325 and A339. Cross boundary are also the M3, M27 and M275.
- 6.9 Further feasibility work, using more rigorous junction assessments, will need to be undertaken to substantiate the findings of the LDF Transport Assessment.
- 6.10 The East Hampshire Transport Assessment (WSP 2013) examines the transport related impacts of delivering the Local Plan growth targets for EHDC and the SDNPA. The report reveals a number of links that are, or could be, over capacity on the strategic network, however the network looks to cope relatively robustly to the strategic housing allocations.
- 6.11 Routes with capacity problems before loading of development traffic include:
- A325 Broxhead Common in Bordon (NB)
 - M27 J12 to J11, J11 to J12, J7 to J5 and J5 to J7
 - M3 J14 to J13, J12 to J13, J11 to J10 and J3 to J2
- 6.12 Potential development impacts are predicted around Petersfield and Horndean.
- 6.13 The local road network may experience capacity issues due to the planned development.
- 6.14 The largest increases in traffic levels caused by development at Horndean are on the A3 and B2149. The B2149 sees an increase of 262 vehicles in the northbound direction.
- 6.15 An increase on the A3 of 262 vehicles northbound on the Petersfield bypass is also estimated. Development at Petersfield also sees increases in traffic levels forecast on the A3 southbound between B2171 and the A325. However, both sections of the A3 remain under-capacity in 2028.
- 6.16 The A325 (Boxhead Common, Bordon (NB)) is already well in excess of capacity in 2028 due to background growth. Therefore, development traffic will have minimal additional effect on the network as this link is already heavily congested. A traffic solution on this link will therefore be required prior to 2028, which should enable better access for new and existing development.
- 6.17 A series of mitigation measures are proposed to negate the traffic impacts presented by the growth proposed.
- 6.18 Funding sources include:
- National transport funding sources (if available);
 - Government funding; and
 - Developer contributions.

6.19 The 2014 Hampshire Local Transport Plan Part B: Implementation Plan 2014 – 2017 chapter 8 provides further details on funding streams.

Rail

6.20 Key providers include Network Rail and South West Trains.

6.21 Rail stations in East Hampshire include:

- Liphook,
- Liss,
- Petersfield; and
- Rowlands Castle; all of which are on the main line to London Waterloo on the Wessex Rail Route.

6.22 There are further rail stations at:

- Alton; and
- Bentley; on the Alton Line to Waterloo.

6.23 In addition to the above there is an oil terminal rail station at Holybourne. A heritage railway runs between Alresford and Alton.

6.24 The “2006 Route Utilisation Strategies” advises longer trains are proposed on suburban routes and station facilities are to be improved.

6.25 The IDP lists a schedule of transport improvements including amongst other measures improved accessibility and parking at Alton railway station and a travel plan.

Bus & Coach

6.26 East Hampshire is served by a variety of bus and coach operators. Community Transport services are currently provided through “Dial-a-Ride” services and “Call & Go” services and Community Transport East Hampshire (CTEH). Key providers include HCC, EHDC, Private bus operators, and the third sector.

6.27 Transport improvements include improved bus shelters, bus stop facilities, and real time information systems. Transport for South Hampshire are proposing a Bus Rapid Transit Network and the A3 Bus Priority Corridor. Community Transport Improvements include a bus service to community forums.

Walking and Cycling

6.28 A series of improvements to footpaths, cycle lanes and cycle parking are proposed including additional cycle stands, storage, improved cycle links and cycle routes.

Schools and Education

6.29 Schools and education include:

- Early years and Childcare
- Primary and Secondary Schools
- Special Schools
- Further and higher education
- Adult Learning

6.30 Hampshire County Council is the Local Education Authority (LEA) for the district and is responsible for planning the provision of primary and secondary school places, and securing an appropriate balance between supply and demand. The County Council responds to change through the annually updated School Places Plan, which is based in part upon projected dwelling numbers and looks five years ahead. Whilst the County can plan for school places in this way, if schools become academies they do not have to follow their advice in terms of agreeing to their capacity.

6.31 The County Council produces a School Places Plan on a regular basis; the most recent being The Hampshire School Place Planning Framework 2013-2018).It predicts future school place demand through to 2016 and compares it with the projected capacity of schools at that time.

6.32 An expansion of school and education places and facilities will be required to meet the increased population resulting from the growth proposed.

6.33 In addition to HCC the Private Sector and Third Sector are key providers.

Healthcare

6.34 Healthcare provision is divided between primary and secondary care.

6.35 The provision of primary healthcare across the country underwent significant change in April 2013 with the abolition of NHS primary care trusts, and their replacement with NHS England and local Clinical Commissioning Groups.

6.36 Lead organisations include:

- SE Hampshire Clinical Commissioning Group;
- North East Hampshire and Farnham Clinical Commissioning Group;
and
- South Central Ambulance Service NHS Trust.

- 6.37 Most GP practices function as separate businesses, with responsibility for their own premises and staff. Individual GP practices determine whether they consider their patient numbers to be too great and which course of action they wish to pursue e.g. expansion of premises. However, overall responsibility for ensuring adequate GP provision across the area rests with NHS England. The Department of Health recommends that there should be one GP per 1400-2000 people.
- 6.38 The need for additional capacity to match population growth is required, with delivery of expanded or new facilities related, in some instances, to specific developments or proposals.

Emergency Services

- 6.39 Hampshire Constabulary is the police service in Hampshire. Additional police buildings, associated facilities and resources may be required to provide effective policing where there is development.
- 6.40 The Hampshire Fire and Rescue Service provide support in East Hampshire.
- 6.41 Ambulance services are provided by the South Central Ambulance Service NHS Trust
- 6.42 Additional capacity to match growth is required.

Flood Defences

- 6.43 The Environment Agency (EA) is responsible for managing flood risk from main rivers and reservoirs. The EA has an overarching role to play in the management of flood risk including the administering and determining applications for flood defence funding, through the partnership approach.
- 6.44 There are two main rivers in the part of East Hampshire covered by the Site Allocations Plan, the River Slea and River Wey, as well as a number of streams, brooks and ditches. Parts of the district are therefore at risk of fluvial flooding and are designated within Flood Zones 2 and 3 by the Environment Agency. Flood risk is categorised as low to moderate in the northern part of the district (around Alton) in the Thames Catchment Flood Management Plan (CFMP). In the South East Hampshire CFMP part of the district (around the south west of the District) the main source of flooding is from groundwater sources; however the Environment Agency categorise the risk as low to moderate. In the south east of the district, in the Arun and Western Streams Catchment, the flood risk is classed as an area with low to moderate flood risk in the rural areas.
- 6.45 All of the CFMPs highlight that flood risk will increase over time and that the current approach to flood management will need to be kept under review in order to adequately manage flood risk going forward.
- 6.46 East Hampshire is susceptible to flooding from sources other than fluvial, including groundwater and surface water flooding. Much of East

Hampshire is underlain by chalk, and recent research tends to suggest that chalk aquifers are more prone to groundwater flooding than other aquifers.

- 6.47 There is a need for additional flood protection capacity to match the growth proposed.

Social Infrastructure

- 6.48 Social infrastructure can include amongst other items:

- Sports, leisure and heritage facilities;
- Supported housing,
- Allotments,
- Cemeteries and crematorium; and
- Libraries.

- 6.49 Existing built sport facilities include: Alton Sports Centre, Taro Leisure Centre (Petersfield), and Mill Chase Leisure Centre (Bordon)

- 6.50 Lead Organisations include Hampshire County Council and EHDC.

Green Infrastructure

- 6.51 The Green Infrastructure Study for East Hampshire (2011) was prepared to support the sustainable development of communities, towns and villages throughout East Hampshire and the EH part of the South Downs National Park. The 2011 study identified 78 projects at the settlement level, and 17 at the district scale.

- 6.52 A Habitats Regulations Assessment as part of the development of the East Hampshire Joint Core Strategy was undertaken by URS in July 2013. It concluded that 'significant urbanisation, air quality and water resource effects are unlikely to occur as a result of Joint Core Strategy development and that following the introduction of a policy to address the recreational pressure impacts of Whitehill & Bordon (responsible for 95% of all currently uncommitted housing within 5km of the Wealden Heaths Phase II SPA) the residual increase in recreational activity due to the small amount of development elsewhere in central Hampshire is unlikely to lead to significant effects and thus will not require further strategic mitigation'. In addition 'the Council's ongoing commitment to the Solent Disturbance and Mitigation project will enable adequate strategic mitigation to be delivered for recreational pressure' thus preventing likely significant effects upon the Solent European sites (Solent Maritime SAC; Portsmouth Harbour SPA and Ramsar site; and Chichester & Langstone Harbours SPA and Ramsar site).

Utilities

Waste and recycling

- 6.53 HCC is the waste disposal authority for Hampshire, whilst EHDC is a waste collection authority. Biffa Municipal has been awarded the contract for the joint recycling and refuse collection service for East Hampshire District Council (EHDC) and Winchester City Council (WCC).
- 6.54 Additional waste and recycling facilities will be required to match the growth proposed.

Water Supply

- 6.55 Key providers include:
- South East Water
 - Southern Water
 - Portsmouth Water
 - Thames Water
- 6.56 The Water Act allows water companies to charge developers for a contribution towards any reinforcement of the network and new mains as required.

Portsmouth Water

- 6.57 Portsmouth Water provides water to 300,000 homes and businesses, including part of southern East Hampshire.
- 6.58 A new winter storage reservoir at Havant Thicket within the district has been identified as a feasible and sustainable option for meeting future water demand.
- 6.59 Portsmouth Water has not identified a supply demand deficit in the 25 year period to 2040.

South East Water

- 6.60 SE Water advise that the customer metering programme and enhanced water efficiency will initially reduce demand. For peak demands a deficit is forecast from 2020 onwards. An additional 145 million litres of water will be needed by 2040.

- 6.61 The published planned programme will be fully able to satisfy the growth demands. New mains will be required to reinforce the existing network.
- 6.62 A number of major proposals are set out in the WRMP, including the development of six transfer schemes to share water with Thames Water, Southern Water and Portsmouth Water (and other companies), although no specific schemes are identified in East Hampshire.

Southern Water

- 6.63 SW plan an investment programme across Hampshire. £3bn of investment during 2015/2020 will reduce leakage, repair and maintain sewers and further improve water quality.

Thames Water

- 6.64 Thames Water advise that:
- There is spare network capacity at Alton however small improvements may be needed to accommodate an increase in load;
 - Phasing of development in the Liphook area will be vital to ensure upgrades are in place ahead of occupation. Further investigations should be carried out into the capacity of the sewers;
 - Upgrades to the network should be anticipated at Grayshott, Bentley, Four Marks/Medstead, and Whitehill and Bordon, and investigations will be required into the impact of development at Headley; and
 - In all cases, *“developers will be required to demonstrate that there is adequate waste water capacity both on and off site to serve the development and that it would not lead to problems for existing or new uses.”*

Wastewater treatment /Sewerage

- 6.65 Key providers include:
- Thames Water - statutory sewerage undertaker for the majority of the district including Bordon and Alton
 - Southern Water – Statutory Sewerage Undertaker
- 6.66 Water companies have a legal obligation under Section 94 of the Water Resources Act 1991 to provide additional capacity as and when required. The costs of providing any new infrastructure and upgrading the existing system to cope with the additional demands placed upon it are expected to be borne by the developer.
- 6.67 Recent improvement schemes have been undertaken in plant at Budds Farm (serving Horndean, Clanfield and Rowlands Castle), Petersfield and Liss.

- 6.68 Investment in infrastructure to provide additional capacity will be required in parallel with new development.
- 6.69 A price review in 2014 with approval from Ofwat's determined funding the investment programme up to 2020 (another price review in 2019 will cover the investment period 2020-25).
- 6.70 The precise investment required to provide new or improved local infrastructure can only be assessed on a site-by-site basis when proposed development sites come forward.
- 6.71 Southern Water confirmed (June 2013) that there was no fundamental reason why the level of development proposed within the Joint Core Strategy should not be progressed unless "the Environment Agency identifies constraints in relation to water quality objectives."
- 6.72 Thames Water advise that new development should be co-ordinated with the infrastructure it demands and to take into account the capacity of existing infrastructure.
- 6.73 Thames Water advise that developers will be required to demonstrate that there is adequate waste water capacity both on and off the site to serve development and that it would not lead to problems for existing or new users. In some circumstances it may be necessary for developers to fund studies to ascertain whether the proposed development will lead to overloading of existing waste water infrastructure.

Gas

- 6.74 Centrica is the company responsible for transporting gas through the National Transmission System (NTS), which is the high-pressure system that transports gas from the import terminals to major centres of population and some large industrial users, such as power stations.
- 6.75 Twelve Local Distribution Zones (LDZs) contain pipes operating at lower pressure, which eventually supply the consumer. The LDZs are managed within eight Gas Distribution Networks (GDNs). The distribution network in Hampshire is owned and managed by Scotia Gas Networks, operating as Southern Gas Networks.

Electricity

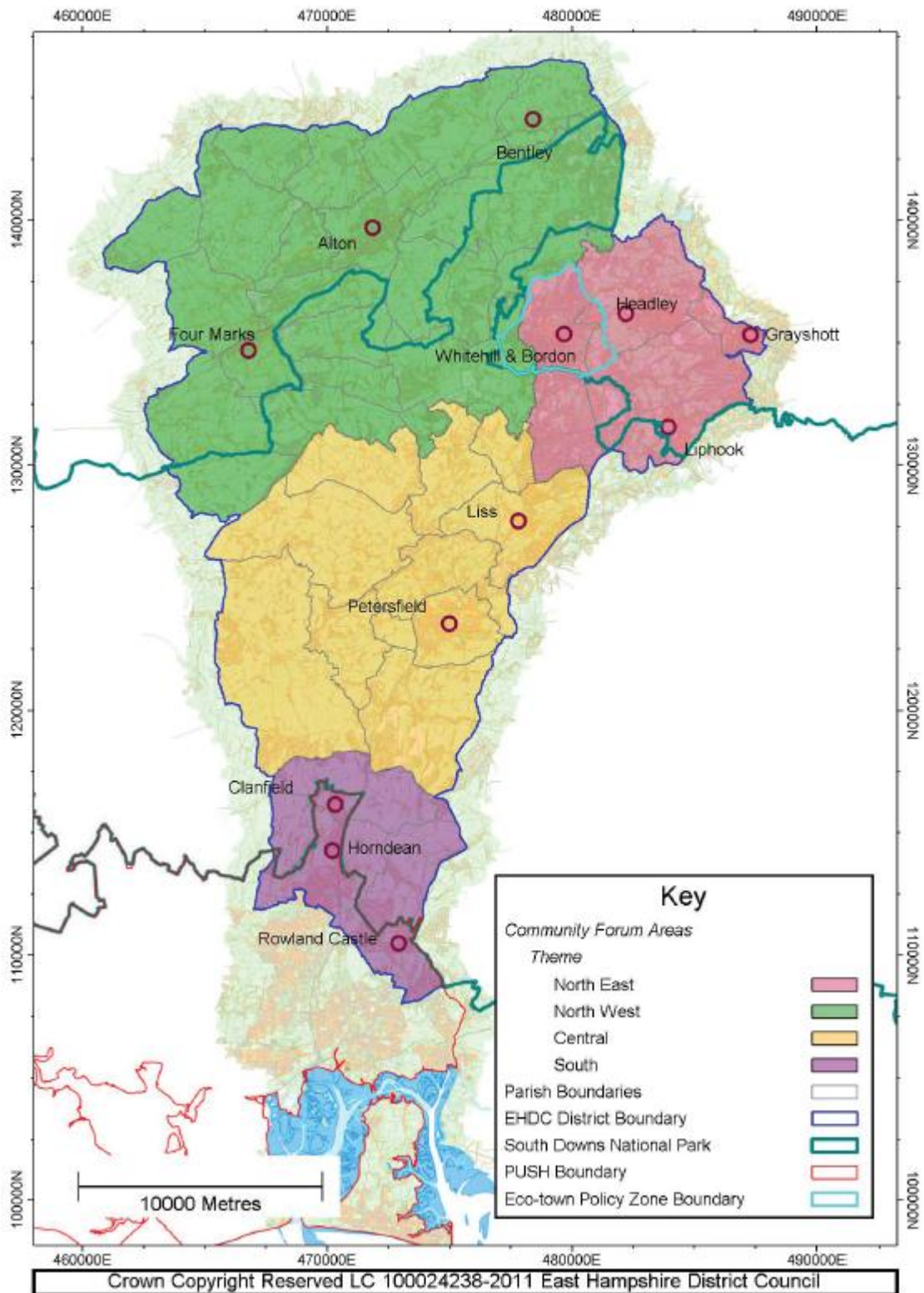
- 6.76 National Grid owns and maintains the high-voltage electricity transmission system in England, and operates the system across Great Britain. Scottish and Southern Energy (SSE) is the local Distribution Network Operator (DNO) covering the whole of Hampshire. SSE are the owners and operators of the network of towers and cables that bring electricity from the high-voltage transmission network to homes and businesses. Southern Electric (part of Scottish and Southern Energy group) is the company which then supplies and sells electricity to domestic, commercial and smaller industrial premises.

- 6.77 SSE published a 'Long-Term Development Statement' in November 2013 which covers the period 2017. The statement indicates that there is no specific need for any additional strategic electricity infrastructure.

Telecommunications

- 6.78 BT is responsible for the static broadband network across the country. Access to high speed broad-band is an increasingly important consideration in business operations, working practises and for personal use within the home.
- 6.79 The scope of influence of the planning system with regard to telecommunications development is somewhat limited. The General Permitted Development Order (1995 and subsequent amendments) enables a significant amount of telecommunications development to take place with only limited local authority control over siting and design.

Plan 1: IDP Spatial Context



7 Appendix 1 – Schedule of Identified Requirements

	B	C	D	E	F	G	H	I	J	K	L	M	N
1	Area	Ref	Category	Location	Project	Priority	Cost	Funding Secured	Funding Gap	Delivery Lead	Timescale	Sources of Funding	Evidence
2	District Wide		Transport	Various	East Hants CAP Delivery- Strategic improvements to the rural network.	Important	TBA	TBA	TBA	HCC Countryside Service	2024	CIL	HCC Countryside Access Plan 2008 HCC Draft Countryside Access Plan 2015
3	District Wide		Social	Various	Extra care housing provision-314 units to meet needs in East Hampshire district (excluding SDNP)	Important	£49,808,250	£0	£49,808,250	HCC Adult Services Department	2025	CIL	Hampshire Strategic Infrastructure Statement Version 1 (HCC, February 2013)
4	District Wide		Utilities	Various	Improvements to wastewater treatment works	Critical	TBA	TBA	TBA	Southern Water Thames Water	On-going	Developer's contributions and Water Companies	Southern Water Thames Water
5	District Wide		Utilities	Various	Site specific improvements to local sewerage infrastructure	Critical	TBA	TBA	£0	Southern Water Thames Water	On-going	Developer's contributions and Water Companies	Southern Water Thames Water
6	District Wide		Utilities	Rowlands Castle - Havant Thicket	Havant Thicket Reservoir – Green Infrastructure 65ha of multifunctional open access greenspace in the managed GI network	Important	£30-40m	TBA	TBA	Portsmouth Water	2021	Developer's contributions and Water Companies	South Hampshire: Integrated Water Management Strategy Partnership for Urban South Hampshire (PUSH) (Atkins, December 2008) Water Resources in the South East Group - Progress towards a shared water resources strategy in the South East of England - Final Report (Version 8) April 2010
7													
8	Alton	EHDC0002	Transport	Alton: The Butts junction: Winchester Road / A339	Bridge widening to remove bottleneck on approaches to Alton	Important	£8,000,000	£0	£8,000,000	HCC	TBA	CIL	EHDC Schedule of Transport Improvements Nov 2014
9	Alton	EHDC0003	Transport	Alton: western bypass	Alton western bypass linking A31 with A339	Important	£35-55m	£0	£35,000,000	HCC	TBA	CIL	EHDC Schedule of Transport Improvements Nov 2014
10	Alton	EHDC0004	Transport	Alton: junction of the A31 and B3004	Junction improvements	Important	£10,000,000	£0	£10,000,000	HCC	TBA	CIL	EHDC Schedule of Transport Improvements Nov 2014
11	Alton	EHDC0005	Transport	Mill Lane/B3004 junction, Alton	Junction improvements including signalisation and parking controls	Important	£150,000	£150,000	£0	S278 developer to construct	TBA	S278 developer to construct	EHDC Schedule of Transport Improvements Nov 2014
12	Alton	EHDC0006	Transport	London Road/Anstey Road, Alton	Junction improvements including signalisation	Important	£150,000	£150,000	£0	S278 developer to construct	TBA	S278 developer to construct	EHDC Schedule of Transport Improvements Nov 2014
13	Alton	EHDC0007	Transport	Mill Lane / Paper Mill Lane / Wilson Road /	Junction improvements double mini roundabout	Important	£150,000	£150,000	£0	S278 developer to construct	TBA	S278 developer to construct	EHDC Schedule of Transport Improvements Nov 2014
14	Alton	EHDC0008	Transport	Whitedown Lane/Basingstoke	Installation of a roundabout	Important	£150,000	£0	£150,000	HCC	TBA	CIL	EHDC Schedule of Transport Improvements Nov 2014
15	Alton	EHDC0009	Transport	Anstey Lane/Anstey Road, Alton	Junction improvements including traffic calming, pedestrian facilities and parking controls	Important	£200,000	£0	£200,000	HCC	TBA	CIL	EHDC Schedule of Transport Improvements Nov 2014
16	Alton	EHDC0010	Transport	Mill Lane, Alton	Provision of off road parking spaces	Important	£50,000	£0	£50,000	HCC	TBA	CIL	EHDC Schedule of Transport Improvements Nov 2014
17	Alton	EHDC0011	Transport	Wootey Schools, Alton	Provision of traffic calming measures near Wootey Schools including pinch points, 20mph	Important	£50,000	£0	£50,000	HCC	TBA	CIL	EHDC Schedule of Transport Improvements Nov 2014
18	Alton	EHDC0012	Transport	Chauntsingers Road / Amery Hill / Church St	Traffic calming measures	Important	£50,000	£0	£50,000	HCC	TBA	CIL	EHDC Schedule of Transport Improvements Nov 2014
19	Alton	EHDC0013	Transport	Holybourne, Alton	Installation of traffic calming and investigation into possible new parking controls through	Important	£100,000	£0	£100,000	HCC	TBA	CIL	EHDC Schedule of Transport Improvements Nov 2014
20	Alton	EHDC0014	Transport	Alton Town Centre	Car Park guidance system	Important	£30,000	£0	£30,000	HCC	TBA	CIL	EHDC Schedule of Transport Improvements Nov 2014
21	Alton	EHDC0015	Transport	Alton Town Centre	Environmental enhancements to town centre	Important	£150,000	£150,000	£0	HCC	TBA	HCC	EHDC Schedule of Transport Improvements Nov 2014
22	Alton	EHDC0016	Transport	Greenfields Avenue and Southview Rise,	Investigation into reported speeding problem	Important	£10,000	£0	£10,000	HCC	TBA	CIL	EHDC Schedule of Transport Improvements Nov 2014
23	Alton	EHDC0017	Transport	Draymans Way, Alton	Provision of 2x bus shelters for stops next to Sainsburys foodstore	Important	£15,000	£0	£15,000	HCC	TBA	CIL	EHDC Schedule of Transport Improvements Nov 2014
24	Alton	EHDC0018	Transport	Alton rail station	Improve accessibility at Alton railway station including improvements to the forecourt	Important	£150,000	£0	£0	HCC	TBA	EHDC	EHDC Schedule of Transport Improvements Nov 2014
25	Alton	EHDC0019	Transport	Alton rail station	Produce a travel plan for the station	Important	£50,000	£0	£50,000	HCC	TBA	CIL	EHDC Schedule of Transport Improvements Nov 2014
26	Alton	EHDC0020	Transport	Alton rail station	Review car and cycle parking at station and provide more spaces	Important	£200,000	£0	£200,000	Network rail/SWTrains	TBA	CIL	EHDC Schedule of Transport Improvements Nov 2014
27	Alton	EHDC0021	Transport	London Road, Holybourne	Widening footway and installation of dropped kerbs to facilitate crossing	Important	£50,000	£0	£50,000	HCC	TBA	CIL	EHDC Schedule of Transport Improvements Nov 2014
28	Alton	EHDC0022	Transport	Riverside Walk: between TC and Tesco on the east side of Alton	Upgrade footway between station and new Tesco development	Important	£50,000	£50,000	£0	S278 developer to construct	TBA	S278 developer to construct	EHDC Schedule of Transport Improvements Nov 2014
29	Alton	EHDC0023	Transport	Church Street, Alton	Provision of a crossing on Church Street	Important	£10,000	£10,000	£0	HCC	TBA	HCC	EHDC Schedule of Transport Improvements Nov 2014

	B	C	D	E	F	G	H	I	J	K	L	M	N
1	Area	Ref	Category	Location	Project	Priority	Cost	Funding Secured	Funding Gap	Delivery Lead	Timescale	Sources of Funding	Evidence
30	Alton	EHDC0026	Transport	Treloar College, Alton	Carriageway/footway works (including courtesy crossings) to improve access to the college	Important	£30,000	£30,000	£0	HCC	TBA	HCC	EHDC Schedule of Transport Improvements Nov 2014
31	Alton	EHDC0156	Transport	Alton	12 cycle stands at three locations: Jubilee playing fields, Anstey Park and Chawton Park indoor	Important	£5,000	£0	£5,000	HCC	TBA	CIL	EHDC Schedule of Transport Improvements Nov 2014
32	Alton	EHDC0157	Transport	Alton, Leisure Centre	Cycle stands at Alton Leisure Centre	Important	£5,000	£0	£5,000	HCC	TBA	CIL	EHDC Schedule of Transport Improvements Nov 2014
33	Alton	EHDC0158	Transport	Alton	Cycle ramp added to A31 underpass (this is in HCC 15/16 capital programme)	Important	£5,000	£5,000	£0	HCC	TBA	HCC	EHDC Schedule of Transport Improvements Nov 2014
34	Alton	EHDC0162	Transport	Alton, Health Centre	Cycle storage Alton Health Centre forecourt	Important	£5,000	£0	£5,000	HCC	TBA	CIL	EHDC Schedule of Transport Improvements Nov 2014
35	Alton	EHDC0163	Transport	Alton, Ladyplace Car Park	Cycle Storage Alton Ladyplace Car park	Important	£5,000	£0	£5,000	HCC	TBA	CIL	EHDC Schedule of Transport Improvements Nov 2014
36	Alton	EHDC0164	Transport	Alton, Normandy Street	Cycle Storage Normandy Street	Important	£5,000	£0	£5,000	HCC	TBA	CIL	EHDC Schedule of Transport Improvements Nov 2014
37	Alton	EHDC0192	Transport	Holybourne	Treloar School - See school travel plan written Mar-10	Important	£15,000	£0	£15,000	HCC	TBA	CIL	EHDC Schedule of Transport Improvements Nov 2014
38	Alton	EHDC0200	Transport	Alton Eastbrooke	Alton Infant School - See school travel plan written Mar-10	Important	£15,000	£0	£15,000	HCC	TBA	CIL	EHDC Schedule of Transport Improvements Nov 2014
39	Alton	EHDC0201	Transport	Alton Westbrooke	St Lawrence C E Primary School - See school travel plan written Mar-05	Important	£15,000	£0	£15,000	HCC	TBA	CIL	EHDC Schedule of Transport Improvements Nov 2014
40	Alton	EHDC0202	Transport	Holybourne and Froyle	Andrews' Endowed C E Primary School - See school travel plan written Mar-10	Important	£15,000	£0	£15,000	HCC	TBA	CIL	EHDC Schedule of Transport Improvements Nov 2014
41	Alton	EHDC0203	Transport	Alton Wooteys	Wootey Infant & Junior School - See school travel plan written Apr-07	Important	£15,000	£0	£15,000	HCC	TBA	CIL	EHDC Schedule of Transport Improvements Nov 2014
42	Alton	EHDC0204	Transport	Alton Westbrooke	Amery Hill School - See school travel plan written Oct-08	Important	£15,000	£0	£15,000	HCC	TBA	CIL	EHDC Schedule of Transport Improvements Nov 2014
43	Alton	EHDC0205	Transport	Alton Whitedown	The Butts Primary School - See school travel plan written Mar-07	Important	£15,000	£0	£15,000	HCC	TBA	CIL	EHDC Schedule of Transport Improvements Nov 2014
44	Alton	EHDC0206	Transport	Holybourne and Froyle	Eggar's School - See school travel plan written Mar-07	Important	£15,000	£0	£15,000	HCC	TBA	CIL	EHDC Schedule of Transport Improvements Nov 2014
45	Alton	EHDC0207	Transport	Alton Eastbrooke	Anstey Junior School - See school travel plan written Mar-04	Important	£15,000	£0	£15,000	HCC	TBA	CIL	EHDC Schedule of Transport Improvements Nov 2014
46	Alton	EHDC0208	Transport	Alton Wooteys	Alton Convent School - See school travel plan	Important	£15,000	£0	£15,000	HCC	TBA	CIL	EHDC Schedule of Transport Improvements Nov 2014
47	Alton	EHDC0209	Transport	Alton Eastbrooke	Bushy Leaze Early Years Centre - See school travel plan written Feb-10	Important	£15,000	£0	£15,000	HCC	TBA	CIL	EHDC Schedule of Transport Improvements Nov 2014
48	Alton	EHDC0248	Transport	Alton railway station to town centre	Improve ped and cycle links including crossing points on this route from railway station to town centre	Important	£250,000	£250,000	£0	HCC	TBA	HCC	EHDC Schedule of Transport Improvements Nov 2014
49	Alton area	EHDC0123	Transport	B3349 / Froyle Rd / The Avenue junction (3m)	Investigate junction improvements to include possible signalisation	Important	£100,000	£0	£100,000	HCC	TBA	CIL	EHDC Schedule of Transport Improvements Nov 2014
50	Alton		Schools & Education		Wootey Infant and Junior Schools- 210 primary places to cover Alton	Critical	£4,100,000	£0	£4,100,000	HCC Children's Services Dept	2018	CIL	Hampshire Strategic Infrastructure Statement Version 1 (HCC, February 2013)
51	Alton		Social		Refurbish Alton Library to provide sufficient space to meet MLA standards.	Important	£1,000,000	£0	£1,000,000	HCC	2017	CIL	HCC Strategic Infrastructure Statement 2013
52	Alton		Social		Alton Sports Centre	Critical	£21,600,000	£7,600,000	£14,000,000	HCC	2017-22	Mixed	East Hampshire District Council Leisure Built Facilities Strategy 2012- 2026 (June 2012)
53	Alton		Social		Provision of junior football pitches, Alton	Important	£100,000	TBA	TBA		2017-22	CIL	Open Space, Sports and Recreation Study for EHDC 2008 Green Infrastructure Study for EHDC 2011
54	Alton		Social		Provision of allotments, Alton	Important	TBA	TBA	TBA		2017-22	CIL	Open Space, Sports and Recreation Study for EHDC 2008 Green Infrastructure Study for EHDC 2011
55	Alton	EMP1	Transport	Land at Lynch Hill	Traffic measures to reduce impact on adjoining roads	Important			£0	HCC	TBA	S106	EHDC Site Allocations Plan
56	Alton	EMP1	Transport	Land at Lynch Hill	Improved access to public transport	Important			£0	HCC	TBA	S106	EHDC Site Allocations Plan
57	Alton	EMP1	Schools & Education	Land at Lynch Hill	Provision of a local Employment and Training Agreement	Important			£0		TBA	S106	EHDC Site Allocations Plan
58	Alton	EMP2	Transport	Land at Wilsom Road	Traffic measures to reduce impact on adjoining roads	Important			£0		TBA	S106	EHDC Site Allocations Plan
59	Alton	EMP2	Transport	Land at Wilsom Road	Enhanced bus facilities on Wilsom Road	Important			£0		TBA	S106	EHDC Site Allocations Plan
60	Alton	EMP2	Schools & Education	Land at Lynch Hill	Provision of a local Employment and Training Agreement	Important			£0		TBA	S106	EHDC Site Allocations Plan
61	Alton	Alton TC	Social		Adult outdoor fitness equipment (possibly in Anstey Park).	Important	£50,000	£0	£0	HCC	TBA	CIL	North West Forum Area
62	Alton	Alton TC	Social		Play area enhancement programme	Important	£100,000	£0	£0	HCC	TBA	CIL	North West Forum Area

	B	C	D	E	F	G	H	I	J	K	L	M	N
1	Area	Ref	Category	Location	Project	Priority	Cost	Funding Secured	Funding Gap	Delivery Lead	Timescale	Sources of Funding	Evidence
63	Alton	Alton TC	Social		Upgrade of existing hard surfaced courts in Anstey Park.	Important	£100,000	£0	£0	HCC	TBA	CIL	North West Forum Area
64	Alton	Alton TC	Social		Skatepark enhancement	Important	£50,000	£0	£0	HCC	TBA	CIL	North West Forum Area
65	Alton	Alton TC	Social		Pavilion replacement project for Jubilee Playing Fields.	Important	£900,000	£0	£0	HCC	TBA	CIL	North West Forum Area
66													
67	Beech	EHDC0027	Transport	Alton to Beech (north west of Alton), cycle route	A route along Market Street, Lenten Street & Basingstoke Road (A339) to the nearby settlement of Beech. Part of Sustrans NCN Route 23 to Basingstoke. EHDC cycle strategy AL3)	Important	£100,000	£0	£100,000	HCC	TBA	CIL	EHDC Schedule of Transport Improvements Nov 2014
68	Beech	EHDC0186	Transport	Medstead Road & Kings Hill	Traffic Calming	Important	£50,000	£0	£50,000	HCC	TBA	CIL	EHDC Schedule of Transport Improvements Nov 2014
69													
70	Bentley	EHDC0128	Transport	School Lane	Provision of a crossing (either zebra or informal) on School Lane	Important	£60,000	£0	£60,000	HCC	TBA	CIL	EHDC Schedule of Transport Improvements Nov 2014
71	Bentley	EHDC0160	Transport	Bentley	Cycle Route from Holybourne to Bentley via A31 and Froyle	Important	£100,000	£0	£100,000	HCC	TBA	CIL	EHDC Schedule of Transport Improvements Nov 2014
72	Bentley	EHDC0161	Transport	Bentley	Cycle Route Bentley Village to Bentley Station via Station Road	Important	£100,000	£0	£100,000	HCC	TBA	CIL	EHDC Schedule of Transport Improvements Nov 2014
73	Bentley	EHDC0193	Transport	Bentley	Bentley C E Primary School - See school travel plan written Mar-05	Important	£15,000	£0	£15,000	HCC	TBA	CIL	EHDC Schedule of Transport Improvements Nov 2014
74	Bentley	EHDC0240	Transport	Old Main Road	Traffic calming or 20mph speed limit due to speed & volume of traffic	Important	£25,000	£0	£25,000	HCC	TBA	CIL	EHDC Schedule of Transport Improvements Nov 2014
75	Bentley	Bentley PC	Social		Replacement sports pavilion at the Recreation Ground providing facilities for scouts, sports and community office	Important	TBA		TBA	HCC	TBA	CIL	Draft Neighbourhood Plan for Bentley
76	Bentley	Bentley PC	Social		Upgraded play equipment at the Recreation Ground, providing facilities for both children and teenagers	Important	TBA		TBA	HCC	TBA	CIL	Draft Neighbourhood Plan for Bentley
77	Bentley	Bentley PC	Schools & Education		Investment in Bentley Primary School to increase capacity and improve facilities	Important	TBA		TBA	HCC	TBA	CIL	Draft Neighbourhood Plan for Bentley
78	Bentley	Bentley PC	Utilities		Investment in the local electricity supply, to reduce the frequent power cuts	Important	TBA		TBA		TBA	CIL	Draft Neighbourhood Plan for Bentley
79	Bentley	Bentley PC	Healthcare		Increase the capacity at the GP Surgery	Important	TBA		TBA	NHS	TBA	CIL	Draft Neighbourhood Plan for Bentley
80													
81	Bentworth	EHDC0198	Transport	Bentworth	St Mary's Bentworth C E Primary School - See school travel plan written Mar-10	Important	£15,000	£0	£15,000	HCC	TBA	CIL	EHDC Schedule of Transport Improvements Nov 2014
82	Bentworth	VL1	Transport	Land at corner of Church Street and	Traffic measures to reduce impact on adjoining roads	Important			£0		TBA	S106	EHDC Site Allocations Plan
83	Bentworth	VL1	Utilities	Land at corner of Church Street and	On and off site sewerage provision	Important			£0		TBA	S106	EHDC Site Allocations Plan
84													
85	Binsted	EHDC0127	Transport	Binsted	Upgrade existing bus stop facilities at the Jolly Farmer crossroads on the Blacknest corridor	Important	£10,000	£0	£10,000	HCC	TBA	CIL	EHDC Schedule of Transport Improvements Nov 2014
86	Binsted	EHDC0189	Transport	Binsted	Binsted C E Primary School - See school travel plan written in Mar-07	Important	£15,000	£0	£15,000	HCC	TBA	CIL	EHDC Schedule of Transport Improvements Nov 2014
87													
88	Blackmoor	EHDC0129	Transport	Drift Road	Provision of a crossing on Drift Road along with installation of 30mph and school warning signs	Important	£70,000	£0	£70,000	HCC	TBA	CIL	EHDC Schedule of Transport Improvements Nov 2014
89													
90	Bramshott & Liphook		Social		Improvements to War Memorial recreation ground, Liphook including toilet facilities	Important	TBA	TBA	TBA		2017-22	CIL	Open Space, Sports and Recreation Study for EHDC 2008 Green Infrastructure Study for EHDC 2011
91	Bramshott & Liphook	Community Forum	Social	Recreation Ground	Provision of toilet facilities		£200,000	£0	£200,000		TBA	CIL	Community Forum
92	Bramshott & Liphook	Community Forum	Social		New skate park		£50,000	£0	£50,000		TBA	CIL	Community Forum

	B	C	D	E	F	G	H	I	J	K	L	M	N
1	Area	Ref	Category	Location	Project	Priority	Cost	Funding Secured	Funding Gap	Delivery Lead	Timescale	Sources of Funding	Evidence
	Bramshott & Liphook	Community Forum	Social	Radford Park	Capital Projects to enhance access and amenity value emerging from the recent Ecological Survey and updating of the Management Plan		£70,000	£0	£70,000		TBA	CIL	Community Forum
93	Bramshott & Liphook	Community Forum	Social		Allotments		£70,000	£0	£70,000		TBA	CIL	Community Forum
94	Bramshott & Liphook	Community Forum	Transport		To improve Liphook Station accessibility to allow wheelchair access to trains by installing a ramp on the down platform		£300,000	TBA	TBA		TBA	CIL	Community Forum
95													
96													
97	Clanfield	EHDC0150	Transport	Clanfield, London Road to Green Lane across	Cycle route from London Road to Green Lane across Meadow Croft	Important	£100,000	£100,000	£0	HCC	TBA	HCC	EHDC Schedule of Transport Improvements Nov 2014
98	Clanfield	EHDC0153	Transport	Clanfield	Cycle parking Co-op and Green Lane shops	Important	£5,000	£5,000	£0	HCC	TBA	HCC	EHDC Schedule of Transport Improvements Nov 2014
99	Clanfield	EHDC0187	Transport	New Road, Clanfield	Traffic Calming	Important	£50,000	£50,000	£0	HCC	TBA	HCC	EHDC Schedule of Transport Improvements Nov 2014
100	Clanfield	EHDC0226	Transport	Clanfield	Clanfield Junior School - See school travel plan written Mar-04	Important	£15,000	£15,000	£0	HCC	TBA	HCC	EHDC Schedule of Transport Improvements Nov 2014
101	Clanfield	EHDC0045	Transport	South Lane, Chalton Lane and London Road,	Possible traffic calming and junction improvements to address reported speeding	Important	£150,000	£15,000	£135,000	HCC	TBA	HCC	EHDC Schedule of Transport Improvements Nov 2014
102	Clanfield	EHDC0046	Transport	Drift Road, Clanfield	Provision of pedestrian crossings outside shops on Drift Road	Important	£60,000	£60,000	£0	HCC	TBA	HCC	EHDC Schedule of Transport Improvements Nov 2014
103	Clanfield	EHDC0239	Transport	Clanfield	Green Lane Traffic Calming	Important	£200,000	£200,000	£0	HCC	TBA	HCC	EHDC Schedule of Transport Improvements Nov 2014
104	Clanfield	EHDC0242	Transport	White Dirt Lane	A number of possible measures have been requested (some of which are higher cost physical	Important	£150,000	£150,000	£0	HCC	TBA	HCC	EHDC Schedule of Transport Improvements Nov 2014
105	Clanfield	EHDC0260	Transport	Clanfield	Bus shelter improvements in Clanfield parish	Important	£30,000	£30,000	£0	HCC	TBA	HCC	EHDC Schedule of Transport Improvements Nov 2014
106	Clanfield		Schools & Education		Petersgate Infant School- additional Expansion for 2014	Critical	£594,000	£594,000	£0	HCC Children's Services Dept	TBA	S106	Hampshire Strategic Infrastructure Statement Version 1 (HCC, February 2013)
107	Clanfield		Healthcare	Land at Down Farm, Green Lane	Improvements to Local doctor's surgery in connection with development of Land at Down Farm, Green Lane	Important			£0		TBA	S106	EHDC Housing and Allocations Plan
108	Clanfield		Social		Provision of allotments Clanfield	Important	TBA	TBA	TBA		2017-22	CIL	Open Space, Sports and Recreation Study for EHDC 2008 Green Infrastructure Study for EHDC 2011
109	Clanfield	CF1	Schools & Education	Land at Down Farm, Green Lane	Provision of a local Employment and Training Agreement for development of Land at Down Farm, Green Lane	Important			£0	HCC Children's Services Dept	TBA	S106	EHDC Site Allocations Plan
110	Clanfield	CF1	Transport	Land at Down Farm, Green Lane	Traffic measures to reduce impact on adjoining roads	Important			£0		TBA	S106	EHDC Site Allocations Plan
111	Clanfield	CF1	Transport	Land at Down Farm, Green Lane	Measures to improve accessibility by non-car transport modes	Important			£0		TBA	S106	EHDC Site Allocations Plan
112	Clanfield	CF1	Green Infrastructure	Land at Down Farm, Green Lane	Public open space	Important			£0		TBA	S106	EHDC Site Allocations Plan
113	Clanfield	CF1	Social	Land at Down Farm, Green Lane	Allotments	Important			£0		TBA	S106	EHDC Site Allocations Plan
114	Clanfield	CF1	Social	Land at Down Farm, Green Lane	Bowling green	Important			£0		TBA	S106	EHDC Site Allocations Plan
115	Clanfield	CF1	Social	Land at Down Farm, Green Lane	Sports pitches	Important			£0		TBA	S106	EHDC Site Allocations Plan
116	Clanfield	CF1	Social	Land at Down Farm, Green Lane	Sports pavilion	Important			£0		TBA	S106	EHDC Site Allocations Plan
117	Clanfield	CF1	Social	Land at Down Farm, Green Lane	Children's play facilities	Important			£0		TBA	S106	EHDC Site Allocations Plan
118	Clanfield	CF2	Transport	Drift Road	Traffic measures to reduce impact on adjoining roads	Important			£0		TBA	S106	EHDC Site Allocations Plan
119	Clanfield	CF3	Transport	Trafalgar Rise	Traffic measures to reduce impact on adjoining roads	Important			£0		TBA	S106	EHDC Site Allocations Plan
120	Clanfield	Clanfield PC	Transport		Improvements to South Lane Meadow car park	Important	£15,000	£0	£15,000	HCC	TBA	CIL	South Forum Area
121	Clanfield	Clanfield PC	Transport		Improved access/landscaping at the Memorial Hall	Important	£15,000	£0	£15,000	HCC	TBA	CIL	South Forum Area
122	Clanfield	Clanfield PC	Social		Improvements to/replacement of the Skate Ramp in Peel Park	Important	£60,000	£0	£60,000	HCC	TBA	CIL	South Forum Area

	B	C	D	E	F	G	H	I	J	K	L	M	N
1	Area	Ref	Category	Location	Project	Priority	Cost	Funding Secured	Funding Gap	Delivery Lead	Timescale	Sources of Funding	Evidence
123	Clanfield	Clanfield PC	Social		Installation of PV panels on Peel Park pavilion	Important	£25,000	£0	£25,000		TBA	CIL	South Forum Area
124													
125	Clanfield & Hordean	EHDC0146	Transport	Hordean	To provide a missing section of cycle route between Snells Corner and Hordean War Memorial	Important	£100,000	£0	£100,000	HCC	TBA	CIL	EHDC Schedule of Transport Improvements Nov 2014
126	Clanfield & Hordean	EHDC0149	Transport	Hordean	Address drainage and resurfacing to Denmead Bridleway 41(check is in District)	Important	£100,000	£0	£100,000	HCC	TBA	CIL	EHDC Schedule of Transport Improvements Nov 2014
127													
128	Farringdon	EHDC0028	Transport	Alton to Farringdon (South west of Alton),	From Town centre to Farringdon. Part of proposed Sustrans NCN route from Alton to	Important	£90,000	£0	£90,000	HCC	TBA	CIL	EHDC Schedule of Transport Improvements Nov 2014
129	Farringdon	VL2	Transport	Land at Crows Lane, Upper Farringdon	Traffic measures to reduce impact on adjoining roads	Important	TBA	TBA	TBA		TBA	S106	EHDC Site Allocations Plan
130													
131	Four Marks	EHDC0030	Transport	A31/Telegraph Road junction, Four Marks	New pelican crossing on A31 near Telegraph road junction	Important	£130,000	£130,000	£0	HCC Capital Programme 2015/16	TBA	HCC	EHDC Schedule of Transport Improvements Nov 2014
132	Four Marks	EHDC0031	Transport	Four Marks	Provision of crossing points on the A31 through Four Marks	Important	£100,000	£0	£100,000	HCC	TBA	CIL	EHDC Schedule of Transport Improvements Nov 2014
133	Four Marks	EHDC0032	Transport	Four Marks	Installation of a footway along Lymington Bottom Road	Important	£100,000	£0	£100,000	HCC	TBA	CIL	EHDC Schedule of Transport Improvements Nov 2014
134	Four Marks	EHDC0033	Transport	A31/Lymington Bottom, Four Marks	Junction improvements including a pedestrian crossing	Important	£150,000	£0	£150,000	HCC	TBA	CIL	EHDC Schedule of Transport Improvements Nov 2014
135	Four Marks	EHDC0034	Transport	Five Lanes End Junction, Four Marks	Junction improvements including a pedestrian crossing	Important	£150,000	£0	£150,000	HCC	TBA	CIL	EHDC Schedule of Transport Improvements Nov 2014
136	Four Marks	EHDC0035	Transport	The Shrave, Four Marks	Provision of a pedestrian refuge on the A31	Important	£50,000	£0	£50,000	HCC	TBA	CIL	EHDC Schedule of Transport Improvements Nov 2014
137	Four Marks	EHDC0036	Transport	Blackberry Lane/Lymington	Provision of dropped kerbs on the junction	Important	£20,000	£0	£20,000	HCC	TBA	CIL	EHDC Schedule of Transport Improvements Nov 2014
138	Four Marks	EHDC0165	Transport	Four Marks, shopping parade, Winchester	Cycle storage shopping parage, Winchester Road	Important	£5,000	£5,000	£0	HCC	TBA	HCC	EHDC Schedule of Transport Improvements Nov 2014
139	Four Marks	EHDC0166	Transport	Four Marks, Sports Field, Brislands Lane	Cycle Storage sports field, Brislands Lane	Important	£5,000	£5,000	£0	HCC	TBA	HCC	EHDC Schedule of Transport Improvements Nov 2014
140	Four Marks	EHDC0191	Transport	Medstead	Medstead C E Primary School - See school travel plan written Mar-08	Important	£15,000	£0	£15,000	HCC	TBA	CIL	EHDC Schedule of Transport Improvements Nov 2014
141	Four Marks	EHDC0194	Transport	Four Marks	Four Marks C E Primary School - See school travel plan written Mar-03	Important	£15,000	£0	£15,000	HCC	TBA	CIL	EHDC Schedule of Transport Improvements Nov 2014
142	Four Marks	EHDC0258	Transport	A31 Winchester Road	Writers Way - cycle route from Telegraph Lane/Winchester Road/Boyneswood	Important	£100,000	£0	£100,000	HCC	TBA	CIL	EHDC Schedule of Transport Improvements Nov 2014
143	Four marks	EHDC0262	Transport	Boyneswood road bridge	Investigate improvements for pedestrians and cyclists eg new footway, new bridge, priority	Important	£50,000	£0	£50,000	HCC	TBA	CIL	EHDC Schedule of Transport Improvements Nov 2014
144	Four Marks	EHDC0029	Transport	Holybourne to Four Marks (West of Alton),	Provision of cycle route between Holybourne and Four Marks. Some cycle facilities already exist	Important	£100,000	£0	£100,000	HCC	TBA	CIL	EHDC Schedule of Transport Improvements Nov 2014
145	Four Marks	FM1	Transport	Lymington Farm, Four Marks	Traffic measures to reduce impact on adjoining roads	Important			£0		TBA	S106	EHDC Site Allocations Plan
146	Four Marks	FM1	Transport	Lymington Farm, Four Marks	Assessment of the traffic implications at the nearby railway bridge	Important			£0		TBA	S106	EHDC Site Allocations Plan
147	Four Marks	FM1	Utilities	Lymington Farm, Four Marks	On and off site sewerage provision	Important			£0		TBA	S106	EHDC Site Allocations Plan
148	Four Marks	FM1	Social	Lymington Farm, Four Marks	Provision of a local Employment and Training Agreement	Important			£0		TBA	S106	EHDC Site Allocations Plan
149	Four Marks	Four Marks PC	Social		Provision of a new youth sports centre, with ancillary office and meeting rooms. Outline planning permission granted and tender prices being sought.		£500,000	£0	£500,000		TBA	CIL	North West Forum Area
150	Four Marks	Four Marks PC	Social		Improvements/extension to Benian's Pavilion to allow it to host community events such as indoor sports, dances and arts and crafts activities. This would include an extension to the kitchen/bar facilities, now that the village no longer has a public house.		£100,000	£0	£100,000		TBA	CIL	North West Forum Area
151	Four Marks	Four Marks PC	Social		Further improvements to Oak Green, including improvements to the car park and landscaping.		TBA	TBA	TBA		TBA	CIL	North West Forum Area

	B	C	D	E	F	G	H	I	J	K	L	M	N
1	Area	Ref	Category	Location	Project	Priority	Cost	Funding Secured	Funding Gap	Delivery Lead	Timescale	Sources of Funding	Evidence
152	Four Marks	Four Marks PC	Social		Provision of an electronic notice board at Oak Green (possibly in the chemists) with rolling parish newsfeed and touch screen access.		£3,000	£0	£3,000		TBA	CIL	North West Forum Area
153	Four Marks	Four Marks PC	Social		Resurfacing of Uplands Lane, which is the main access to the Four Marks Recreation Ground		£10,000	£0	£10,000		TBA	CIL	North West Forum Area
154	Four Marks	Four Marks PC	Social		Purchase of new projection equipment for Four Marks Film Club		£10,000	£0	£10,000		TBA	CIL	North West Forum Area
155													
156	Grayshott	EHDC0126	Transport	Grayshott: Crossways Road	Traffic Calming	Important	£100,000	£0	£100,000	HCC	TBA	CIL	EHDC Schedule of Transport Improvements Nov 2014
157	Grayshott	EHDC0181	Transport	Grayshott, Grayshott Square	Cycle Storage Grayshott Square	Important	£5,000	£0	£5,000	HCC	TBA	CIL	EHDC Schedule of Transport Improvements Nov 2014
158	Grayshott		Social		Refurbish Grayshott Library to provide sufficient space to meet MLA standards.	Important	£500,000	£0	£500,000	HCC	2017	CIL	HCC Strategic Infrastructure Statement 2013
159	Grayshott		Social		Improvements to playing pitches, Grayshott	Important	TBA	TBA	TBA		2017-22	CIL	Open Space, Sports and Recreation Study for EHDC 2008
160	Grayshott	Grayshott PC	Social	Grayshott Sports Pavilion	Address car park flooding by constructing a new soak-away, repositioning gullies and installing a		£9,000	£0	£9,000		TBA	CIL	North East Forum Area
161	Grayshott	Grayshott PC	Social	Grayshott Sports Pavilion	Re roof the sports pavilion. Strip off pitched roof, replace with rafters and slate finish.		£19,000	£0	£19,000		TBA	CIL	North East Forum Area
162	Grayshott	Grayshott PC	Social	Grayshott Sports Pavilion	Improve access path to rear of pavilion		£2,500	£0	£2,500		TBA	CIL	North East Forum Area
163	Grayshott	Grayshott PC	Social	Grayshott Sports Pavilion	Install external clock on Pavilion building		£1,000	£0	£1,000		TBA	CIL	North East Forum Area
164	Grayshott	Grayshott PC	Social		Establish a youth drop in centre		£8,000	£0	£8,000		TBA	CIL	North East Forum Area
165	Grayshott	Grayshott PC	Social		Establish an area for a netball/basketball hoop, purchase and install equipment		£1,960	£0	£1,960		TBA	CIL	North East Forum Area
166	Grayshott	Grayshott PC	Social		Purchase and installation of additional skate park equipment (double height grind box and flatbank hip)		£11,000	£0	£11,000		TBA	CIL	North East Forum Area
167	Grayshott	Grayshott PC	Social		Extend skate park and purchase/install new equipment		£62,000	£0	£62,000		TBA	CIL	North East Forum Area
168	Grayshott	Grayshott PC	Social		Improve composting area at Beech allotments.		£400	£0	£400		TBA	CIL	North East Forum Area
169	Grayshott	Grayshott PC	Social		Purchase and installation of deer fence to Stoney Bottom allotments.		£2,500	£0	£2,500		TBA	CIL	North East Forum Area
170	Grayshott	Grayshott PC	Social		Extend water supply and install new tap at Stoney Bottom allotments.		£600	£0	£600		TBA	CIL	North East Forum Area
171	Grayshott	Grayshott PC	Social		Installation of an electric meter on the Village Green to feed Christmas lights.		£5,000	£0	£5,000		TBA	CIL	North East Forum Area
172	Grayshott	Grayshott PC	Social		Purchase of a wheeled watering tank to enable smaller beds and planters to be watered regularly.		£2,500	£0	£2,500		TBA	CIL	North East Forum Area
173	Grayshott	Grayshott PC	Social		Community Storage Unit for tables, chairs etc (by public toilets suggested).		£5,000	£0	£5,000		TBA	CIL	North East Forum Area
174													
175	Greatham	EHDC0125	Transport	Greatham: Petersfield Road/Longmoor Road	Investigate measures to address reported traffic issues	Important	£100,000	£0	£100,000	HCC	TBA	CIL	EHDC Schedule of Transport Improvements Nov 2014
176	Greatham	EHDC0246	Transport	Petersfield Road	Extension of layby for additional parking.	Important	£10,000	£0	£10,000	HCC	TBA	CIL	EHDC Schedule of Transport Improvements Nov 2014
177													
178	Headley	EHDC0039	Transport	Mill Lane/High street,Headley	Reconfiguration of island layout to improve safety	Important	£35,000	£0	£35,000	HCC	TBA	HCC 15/16 capital programme	EHDC Schedule of Transport Improvements Nov 2014
179	Headley	EHDC0047	Transport	Eddeys Lane and Mill Lane, Headley	Possible traffic calming and pedestrian facilities to address reported speeding problem	Important	£100,000	£0	£100,000	HCC	TBA	CIL	EHDC Schedule of Transport Improvements Nov 2014
180	Headley	EHDC0048	Transport	Arford Village, Headley	Possible 20mph and traffic calming	Important	£70,000	£0	£70,000	HCC	TBA	CIL	EHDC Schedule of Transport Improvements Nov 2014
181	Headley	EHDC0049	Transport	High Street, Headley	New lining at High Street/Mill Lane junction and possible lining along High Street to address	Important	£5,000	£0	£5,000	HCC	TBA	CIL	EHDC Schedule of Transport Improvements Nov 2014
182	Headley	EHDC0050	Transport	Church Fields, Headley	Investigate alterations to road layout on Church Fields estate to address existing traffic problems	Important	£10,000	£0	£10,000	HCC	TBA	CIL	EHDC Schedule of Transport Improvements Nov 2014
183	Headley	EHDC0051	Transport	Headley Village	Width restriction throughout Headley village	Important	£10,000	£0	£10,000	HCC	TBA	CIL	EHDC Schedule of Transport Improvements Nov 2014

	B	C	D	E	F	G	H	I	J	K	L	M	N
1	Area	Ref	Category	Location	Project	Priority	Cost	Funding Secured	Funding Gap	Delivery Lead	Timescale	Sources of Funding	Evidence
184	Headley	EHDC0052	Transport	Arford Road, Churt Road and Barley Mow	Investigate the use of traffic calming measures such as pinch points, build outs and parking bays	Important	£50,000	£0	£50,000	HCC	TBA	CIL	EHDC Schedule of Transport Improvements Nov 2014
185	Headley	EHDC0053	Transport	Long Cross Hill, Headley	Possible traffic calming measures	Important	£50,000	£0	£50,000	HCC	TBA	CIL	EHDC Schedule of Transport Improvements Nov 2014
186	Headley	EHDC0054	Transport	Arford Road, Headley	Possible 20mph zone	Important	£50,000	£0	£50,000	HCC	TBA	CIL	EHDC Schedule of Transport Improvements Nov 2014
187	Headley	EHDC0180	Transport	Headley, Village Centre, near Holly Bush	Cycle Storage Headley Village Centre, near Holly Bush Pub	Important	£5,000	£0	£5,000	HCC	TBA	CIL	EHDC Schedule of Transport Improvements Nov 2014
188	Headley	EHDC0218	Transport	Headley	Hollywater School - See school travel plan written Mar-07	Important	£15,000	£0	£15,000	HCC	TBA	CIL	EHDC Schedule of Transport Improvements Nov 2014
189	Headley	EHDC0219	Transport	Bramshott and Liphook	Liphook Infant & C E (Controlled) Junior School - See school travel plan written Apr-03	Important	£15,000	£0	£15,000	HCC	TBA	CIL	EHDC Schedule of Transport Improvements Nov 2014
190	Headley	EHDC0220	Transport	Grayshott	Grayshott C E Controlled Primary School - See school travel plan written Mar-06	Important	£15,000	£0	£15,000	HCC	TBA	CIL	EHDC Schedule of Transport Improvements Nov 2014
191	Headley	EHDC0221	Transport	Bramshott and Liphook	Bohunt School - See school travel plan written Aug-02	Important	£15,000	£0	£15,000	HCC	TBA	CIL	EHDC Schedule of Transport Improvements Nov 2014
192	Headley	EHDC0222	Transport	Headley	The Holme C E (Controlled) Primary School - See school travel plan written Mar-07	Important	£15,000	£0	£15,000	HCC	TBA	CIL	EHDC Schedule of Transport Improvements Nov 2014
193	Headley	VL3	Transport	Land at Headley Nurseries, Glayshers	Traffic measures to reduce impact on adjoining roads	Important			£0		TBA	S106	EHDC Site Allocations Plan
194	Headley	VL4	Transport	Land south of Headley Fields, Headley	Traffic measures to reduce impact on adjoining roads	Important			£0		TBA	S106	EHDC Site Allocations Plan
195	Holt Pound	VL5	Transport	Land adjacent to Linden, Fullers Road,	Traffic measures to reduce impact on adjoining roads	Important			£0		TBA	S106	EHDC Site Allocations Plan
196	Holt Pound	VL5	Transport	Land adjacent to Linden, Fullers Road,	Pedestrian crossing on the A325 on the desire line between the site and the northbound bus stop	Important			£0		TBA	S106	EHDC Site Allocations Plan
197	Holt Pound	VL6	Transport	Land adjacent Stream Cottage, Fullers Road,	Traffic measures to reduce impact on adjoining roads	Important			£0		TBA	S106	EHDC Site Allocations Plan
198													
199	Horndean	EHDC0037	Transport	Victory Avenue, Horndean	Traffic calming measures	Important	£50,000	£50,000	£0	HCC	TBA	HCC	EHDC Schedule of Transport Improvements Nov 2014
200	Horndean	EHDC0038	Transport	London Road, White Dirt Lane, Merchistoun	Traffic calming measures on any of the following roads - London Road (Havant Road to A3(M)),	Important	£50,000	£0	£50,000	HCC	TBA	CIL	EHDC Schedule of Transport Improvements Nov 2014
201	Horndean	EHDC0040	Transport	Barton Cross, Horndean	Upgrade of existing Pelican crossing to a Toucan	Important	£60,000	£0	£60,000	HCC	TBA	CIL	EHDC Schedule of Transport Improvements Nov 2014
202	Horndean	EHDC0041	Transport	Catherington Lane, Horndean	Complete cycle route to A3	Important	£75,000	£0	£75,000	HCC	TBA	CIL	EHDC Schedule of Transport Improvements Nov 2014
203	Horndean	EHDC0042	Transport	Merchistoun Road, Horndean	Provision of a cycle route to the college and A3	Important	£50,000	£0	£50,000	HCC	TBA	CIL	EHDC Schedule of Transport Improvements Nov 2014
204	Horndean	EHDC0044	Transport	Woodcroft Farm to Horndean Tech	Cycle route to link amenities in Woodcroft Farm to Horndean Technical College	Important	£25,000	£0	£25,000	HCC	TBA	CIL	EHDC Schedule of Transport Improvements Nov 2014
205	Horndean	EHDC0145	Transport	Horndean	Convert Footpath 26 from Portsmouth road to Lakesmere Road shared use path	Important	£100,000	£0	£100,000	HCC	TBA	CIL	EHDC Schedule of Transport Improvements Nov 2014
206	Horndean	EHDC0147	Transport	Horndean	Installation of cycle route from the junction of whitedirt lane and drift road on the northern	Important	£100,000	£0	£100,000	HCC	TBA	CIL	EHDC Schedule of Transport Improvements Nov 2014
207	Horndean	EHDC0148	Transport	Horndean	To Improve the surface of Bridleways 24,24a and 24b and Havant Bridleway 22	Important	£100,000	£0	£100,000	HCC	TBA	CIL	EHDC Schedule of Transport Improvements Nov 2014
208	Horndean	EHDC0151	Transport	Horndean	Cycle route Horndean village square to Denmead via Portsmouth Road, Five Heads Road,	Important	£100,000	£0	£100,000	HCC	TBA	CIL	EHDC Schedule of Transport Improvements Nov 2014
209	Horndean	EHDC0214	Transport	Horndean Murray	Horndean C E (Controlled) Infant & Junior School - See school travel plan written Mar-05	Important	£15,000	£0	£15,000	HCC	TBA	CIL	EHDC Schedule of Transport Improvements Nov 2014
210	Horndean	EHDC0216	Transport	Horndean Murray	Horndean Technology College - See school travel plan written Feb-97	Important	£15,000	£0	£15,000	HCC	TBA	CIL	EHDC Schedule of Transport Improvements Nov 2014
211	Horndean	EHDC0217	Transport	Catherington	Catherington C E Infant School - See school travel plan written Jan-04	Important	£15,000	£0	£15,000	HCC	TBA	CIL	EHDC Schedule of Transport Improvements Nov 2014
212	Horndean	EHDC0120	Transport	Petersfield to Havant	Central route through Clanfield and Horndean providing links to settlements of Petersfield,	Important	£120,000	£0	£120,000	HCC	TBA	CIL	EHDC Schedule of Transport Improvements Nov 2014
213	Horndean	EHDC0250	Transport	Catherington	Traffic management measures along White Dirt Lane	Important	£45,000	£0	£45,000	HCC	TBA	CIL	EHDC Schedule of Transport Improvements Nov 2014
214	Horndean	HN1	Schools & Education	Land East of Horndean	New two form entry Primary school at Land East of Horndean	Important			£0	HCC Children's Services Dept	TBA	S106	EHDC Site Allocations Plan
215	Horndean	HN1	Social	Land East of Horndean	Community Centre	Important			£0	HCC Children's Services Dept	TBA	S106	EHDC Site Allocations Plan
216	Horndean	HN1	Social	Land East of Horndean	Convenience Shop	Important			£0	HCC Children's Services Dept	TBA	S106	EHDC Site Allocations Plan
217	Horndean	HN1	Transport	Land East of Horndean	Measures to improve accessibility by non-car transport modes	Important			£0		TBA	S106	EHDC Site Allocations Plan
218	Horndean	HN1	Transport	Land East of Horndean	Provision of a new pedestrian crossing on Dell Piece East to connect to the existing footway and	Important			£0		TBA	S106	EHDC Site Allocations Plan
219	Horndean	HN1	Green Infrastructure	Land East of Horndean	Appropriate green infrastructure provision	Important			£0		TBA	S106	EHDC Site Allocations Plan

	B	C	D	E	F	G	H	I	J	K	L	M	N
1	Area	Ref	Category	Location	Project	Priority	Cost	Funding Secured	Funding Gap	Delivery Lead	Timescale	Sources of Funding	Evidence
220	Horndean	HN1	Utilities	Land East of Horndean	On and off site sewerage provision	Important			£0		TBA	S106	EHDC Site Allocations Plan
221	Horndean	HN1	Schools & Education	Land East of Horndean	Provision of a local Employment and Training Agreement for development of Land East of	Important			£0	HCC Children's Services Dept	TBA	S106	EHDC Site Allocations Plan
222	Horndean	HN2	Transport	Land Rear of 185-189A Lovedean Lane	Traffic measures to reduce impact on adjoining roads	Important			£0		TBA	S106	EHDC Site Allocations Plan
223	Horndean		Schools & Education		Refurbish Horndean Library to provide sufficient space to meet MLA standards.	Important	£1,200,000	£0	£1,200,000	HCC	2017	CIL	HCC Strategic Infrastructure Statement 2013
224	Horndean		Social		Provision of youth facilities at Horndean	Important	TBA	TBA	TBA	HCC	2017-22	CIL	Open Space, Sports and Recreation Study for EHDC 2008
225	Horndean	Horndean PC	Social		Additional Play Equipment	Important	TBA		TBA		TBA	CIL	South Forum Area
226	Horndean	Horndean PC	Social		Additions to Jubilee Hall inc. changing/shower/toilet facilities for sports users	Important	TBA		TBA		TBA	CIL	South Forum Area
227	Horndean	Horndean PC	Social		Provision of allotments	Important	TBA		TBA		TBA	CIL	South Forum Area
228	Horndean	Horndean PC	Social		Fencing/hedging to Jay Close play area to improve safety	Important	TBA		TBA		TBA	CIL	South Forum Area
229	Horndean	Horndean PC	Social		Provision of additional playing field	Important	TBA		TBA		TBA	CIL	South Forum Area
230	Horndean	Horndean PC	Social		Provision of a Skatepark	Important	£200,000		£200,000		TBA	CIL	South Forum Area
231	Horndean	Horndean PC	Social		Improvements to facilities at Five Heads Road recreation ground	Important	TBA		TBA		TBA	CIL	South Forum Area
232	Horndean	Horndean PC	Social		Provision of benches, Dell Piece West/ Footpath 26A	Important	£5,000		£5,000		TBA	CIL	South Forum Area
233	Horndean	Horndean PC	Social		Provision of interpretation boards at various open spaces and nature reserves	Important	TBA		TBA		TBA	CIL	South Forum Area
234	Horndean	Horndean PC	Social		Replacement of Napier Hall	Important	£500,000	£0	£500,000		TBA	CIL	South Forum Area
235													
236	Langrish	EHDC0131	Transport	Langrish Hill, Langrish	Provision of a footpath from Langrish Hill to Langrish village green	Important	£50,000	£0	£50,000	HCC	TBA	CIL	EHDC Schedule of Transport Improvements Nov 2014
237													
238	Lindford	EHDC0055	Transport	Liphook Road, Lindford	New/additional parking controls to be investigated outside shops	Important	£20,000	£0	£20,000	HCC	TBA	CIL	EHDC Schedule of Transport Improvements Nov 2014
239	Lindford	EHDC0056	Transport	Liphook Road/Headley Road, Lindford	Provision of a SLR sign	Important	£10,000	£0	£10,000	HCC	TBA	CIL	EHDC Schedule of Transport Improvements Nov 2014
240													
241	Lindford	EHDC0057	Transport	A325/Broxhead Farm Road, Lindford	Extend barrier to prevent u-turns	Important	£25,000	£0	£25,000	HCC	TBA	CIL	EHDC Schedule of Transport Improvements Nov 2014
242	Lindford	EHDC0058	Transport	Liphook Road, Lindford	Upgrade existing bus stop facilities along Lindford Road (including Real Time Information)	Important	£30,000	£0	£30,000	HCC	TBA	CIL	EHDC Schedule of Transport Improvements Nov 2014
243	Lindford	EHDC0059	Transport	Liphook Road, Lindford	Provision of 5 informal pedestrian crossings	Important	£60,000	£0	£60,000	HCC	TBA	CIL	EHDC Schedule of Transport Improvements Nov 2014
244	Lindford	EHDC0247	Transport	Washford Lane, Lindford	Footpath Upgrade - upgrade works on existing footpath linking Lindford and Bordon; including	Important	£30,000	£0	£30,000	HCC	TBA	CIL	EHDC Schedule of Transport Improvements Nov 2014
245	Lindford	EHDC0261	Transport	Taylors Lane, Lindford	Investigate traffic calming in Taylors Lane	Important	£50,000	£0	£50,000	HCC	TBA	CIL	EHDC Schedule of Transport Improvements Nov 2014
246													
247	Liphook	EHDC0111	Transport	Liphook to Hindhead	Via London Road (B2171) and A3 (EHDC cycle strategy LK5)	Important	£150,000	£0	£150,000	HCC	TBA	CIL	EHDC Schedule of Transport Improvements Nov 2014
248	Liphook	EHDC0121	Transport	Longmoor Road to A3	Liphook Square to Liss Village Centre via Longmoor Road (EHDC cycle strategy LK1.b)	Important	£150,000	£0	£150,000	HCC	TBA	CIL	EHDC Schedule of Transport Improvements Nov 2014
249	Liphook	EHDC0122	Transport	Haslemere Road	Liphook Square to Devil's Lane via Haslemere Road (EHDC cycle strategy LK8.b)	Important	£75,000	£0	£75,000	HCC	TBA	CIL	EHDC Schedule of Transport Improvements Nov 2014
250	Liphook	EHDC0171	Transport	Liphook	Cycle Route Liphook to Lindford via Headley Road, Tunbridge Lane, Headley Lane, Liphook Road,	Important	£100,000	£0	£100,000	HCC	TBA	CIL	EHDC Schedule of Transport Improvements Nov 2014
251	Liphook	EHDC0172	Transport	Liphook	Cycle Route Liphook to Headley via Headley Road, Tunbridge Lane, Headley Lane, Liphook Road and	Important	£100,000	£0	£100,000	HCC	TBA	CIL	EHDC Schedule of Transport Improvements Nov 2014
252	Liphook	EHDC0173	Transport	Liphook	Cycle Route Liphook to Petersfield via Portsmouth Road, Pulens Lane, Love Lane, Tor Way, Dragon	Important	£100,000	£0	£100,000	HCC	TBA	CIL	EHDC Schedule of Transport Improvements Nov 2014
253	Liphook	EHDC0174	Transport	Liphook	Cycle route Midhurst Road/Fletchers Field to Railway Station via Midhurst Road and Newton	Important	£100,000	£0	£100,000	HCC	TBA	CIL	EHDC Schedule of Transport Improvements Nov 2014
254	Liphook	EHDC0175	Transport	Liphook	Cycle route Haslemere Road to Library	Important	£100,000	£0	£100,000	HCC	TBA	CIL	EHDC Schedule of Transport Improvements Nov 2014

	B	C	D	E	F	G	H	I	J	K	L	M	N
1	Area	Ref	Category	Location	Project	Priority	Cost	Funding Secured	Funding Gap	Delivery Lead	Timescale	Sources of Funding	Evidence
255	Liphook	EHDC0182	Transport	Liphook	Cycle Storage Station Road and The square and town centre destinations	Important	£5,000	£0	£5,000	HCC	TBA	CIL	EHDC Schedule of Transport Improvements Nov 2014
256	Liphook	EHDC0183	Transport	Liphook	Traffic calming on all the approaches into Liphook due to high speeds	Important	£150,000	£0	£150,000	HCC	TBA	CIL	EHDC Schedule of Transport Improvements Nov 2014
257	Liphook	EHDC0065	Transport	Longmoor Road, Liphook	Provision of a crossing on Longmoor Road near to Bohunt School	Important	£60,000	£0	£60,000	HCC	TBA	CIL	EHDC Schedule of Transport Improvements Nov 2014
258	Liphook		Schools & Education		Up to 210 additional primary places to cover Liphook area (Liphook Infant and Junior schools)	Critical	£4,500,000	£175,000	£4,325,000	HCC Children's Services Dept	2016	CIL	Hampshire Strategic Infrastructure Statement Version 1 (HCC, February 2013)
259	Liphook		Social		Refurbish Liphook Library to provide sufficient space to meet MLA standards.	Important	£200,000	£0	£200,000	HCC	2017	CIL	HCC Strategic Infrastructure Statement 2013
260	Liphook		Social		Provision of allotments, Liphook	Important	TBA	TBA	TBA		2017-22	CIL	Open Space, Sports and Recreation Study for EHDC 2008 Green Infrastructure Study for EHDC 2011
261	Liphook	LP1	Transport	Land at Lowsley Farm, south of A3	Traffic measures to reduce impact on adjoining roads	Important			£0		TBA	S106	EHDC Site Allocations Plan
262	Liphook	LP1	Utilities	Land at Lowsley Farm, south of A3	On and off site sewerage provision	Important			£0		TBA	S106	EHDC Site Allocations Plan
263	Liphook	LP1	Social	Land at Lowsley Farm, south of A3	Provision of a local Employment and Training Agreement	Important			£0		TBA	S106	EHDC Site Allocations Plan
264													
265	Medstead	FM2	Transport	Land at Friars Oak Farm, Boyneswood	Improvements to Boyneswood Road bridge	Important			£0		TBA	S106	EHDC Site Allocations Plan
266	Medstead	FM2	Social	Land at Friars Oak Farm, Boyneswood	Provision of a local Employment and Training Agreement	Important			£0		TBA	S106	EHDC Site Allocations Plan
267	Medstead	VL7	Transport	Land rear of Junipers, South Town Road,	Traffic measures to reduce impact on adjoining roads	Important			£0		TBA	S106	EHDC Site Allocations Plan
268	Medstead	VL7	Utilities	Land rear of Junipers, South Town Road,	On and off site sewerage provision	Important			£0		TBA	S106	EHDC Site Allocations Plan
269	Medstead	VL8	Transport	Land east of Cedar Stables, Castle Street,	Traffic measures to reduce impact on adjoining roads	Important			£0		TBA	S106	EHDC Site Allocations Plan
270	Medstead	VL9	Transport	Land north of Towngate Farm House,	Traffic measures to reduce impact on adjoining roads	Important			£0		TBA	S106	EHDC Site Allocations Plan
271	Medstead	Medstead PC	Transport		Provision of additional car parking at Medstead Village Hall		£55,000	£0	£55,000		TBA	CIL	Alton Forum Report 27/01/15
272	Medstead	Medstead PC	Social		Investment in local community building(s)		£500,000	£0	£500,000		TBA	CIL	Alton Forum Report 27/01/15
273	Medstead	Medstead PC	Social		Acquisition of additional public open space		£125,000	£0	£125,000		TBA	CIL	Alton Forum Report 27/01/15
274	Medstead	Medstead PC	Social		Enlarge and improve the younger children's play area on the Green		£55,000	£0	£55,000		TBA	CIL	Alton Forum Report 27/01/15
275	Medstead	Medstead PC	Social		Provision of an Adult Trim Trail		£10,000	£0	£10,000		TBA	CIL	Alton Forum Report 27/01/15
276	Medstead	Medstead PC	Social		Provision of a Tarmac Play Area for teenagers		£12,000	£0	£12,000		TBA	CIL	Alton Forum Report 27/01/15
277	Medstead	Medstead PC	Social		Resurface the green at the Bowls Club		£42,000	£0	£42,000		TBA	CIL	Alton Forum Report 27/01/15
278	Medstead	Medstead PC	Social		Improvements works to the Village Pond		£35,000	£0	£35,000		TBA	CIL	Alton Forum Report 27/01/15
279	Medstead	Medstead PC	Social		Extension to the Cemetery and creation of a Woodland Burial area		£40,000	£0	£40,000		TBA	CIL	Alton Forum Report 27/01/15
280	Medstead	Medstead PC	Social		Creation of signed village walks with nature information boards		£2,000	£0	£2,000		TBA	CIL	Alton Forum Report 27/01/15
281	Medstead	Medstead PC	Transport		Provision of new footpaths and cycleways in the village		£40,000	£0	£40,000		TBA	CIL	Alton Forum Report 27/01/15
282													
283	Oakhanger	EHDC0188	Transport	Oakhanger Village	Traffic Calming	Important	£50,000	£0	£50,000	HCC	TBA	CIL	EHDC Schedule of Transport Improvements Nov 2014
284													
285	Ropley	EHDC0159	Transport	Ropley	Cycle route Alton to Ropley via The Shrove , Telegraph Lane, Brislands Lane, Court Lane,	Important	£100,000	£0	£100,000	HCC	TBA	CIL	EHDC Schedule of Transport Improvements Nov 2014
286	Ropley	EHDC0190	Transport	Ropley	Ropley C E Primary School - See school travel plan written Nov-04	Important	£15,000	£0	£15,000	HCC	TBA	CIL	EHDC Schedule of Transport Improvements Nov 2014
287	Ropley	VL10	Transport	Land at the corner of Dunsells Lane and	Traffic measures to reduce impact on adjoining roads	Important			£0		TBA	S106	EHDC Site Allocations Plan
288	Ropley	VL11	Transport	Land off Hale Close, Ropley	Traffic measures to reduce impact on adjoining roads	Important			£0		TBA	S106	EHDC Site Allocations Plan
289	Ropley	VL11	Social	Land off Hale Close, Ropley	Relocation of the existing allotments	Important			£0		TBA	S106	EHDC Site Allocations Plan
290	Ropley	VL12	Transport	Land southwest of Dean Cottage, Bighton	Traffic measures to reduce impact on adjoining roads	Important			£0		TBA	S106	EHDC Site Allocations Plan

East Hampshire District Council
Penns Place
Petersfield
Hampshire
GU31 4EX
01730 234280

www.easthants.gov.uk

If you need this information in a different format, for example large print, CD or Braille, please contact the Council.